



Situated on a Mature Wooded Lot

1.25 Acres

\$625,000



**4 Bedroom, 3 Bath
For Sale
With In-Law Suite (Permits in Progress)**



**116 Plymouth Street
Carver, MA 02330**

The Back View



Main House 2,754 sq ft 720 Additional Unfinished sq ft Over Garage

Mature Gardens and a Large Back Yard.

On the left, above the 2-car garage, is a 752 sq. ft. room that is in the permitting process for an in-law suite. Or, perhaps you would like to design your own media room. And yet....a third option....would you like two additional bedrooms with a full bath??

This 752 sq. ft. space has two private exterior entrances and a third egress through the main house. Loads of warm natural light with seven windows overlooking the front and back yards.

A separate heating zone is included in this space.

Mid-center is the mudroom with two skylights. The main entrance to the home is off the dining room which is situated behind the mudroom and flows into the beautiful, open concept kitchen and large living room, featuring vaulted ceiling, a beautiful fireplace and handsome wooden structural beams.

The staircase to the second floor is off the living room, taking you to the two large bedrooms and a full bath. Currently one bedroom is used as an office, far from the sounds and intrusions from the rest of the house. At the foot of the staircase is another front entrance to the home.

To the right is the large Master Suite with an amazing master bath boasting a breathtaking tiled walk-in shower and a heated ceramic tile floor.

The Master Suite has its' own slider to a private deck with a six-person hot tub.

Running the length of the back of the home is a custom 16ft X 56ft deck. You will be have plenty of room for grilling outside with a custom wooden gazebo featuring a ceiling fan and lighting for evening entertaining.

Stepping down from the mudroom deck will take you to a generous textured stone patio 17ft x 33ft with a large built-in textured stone fire pit. A 32ft long brick walkway travels to the front of the house.

Exterior at Dusk



Metal roof covering 100% of house and the unattached shed. Two car garage with access to mud room. Textured stone patio with 32 in x 50 in fire pit. Custom wood gazebo, with metal roof, sits upon the 16 ft x 56 ft deck.



Hot tub sits on a 10ft x 12 ft Trek deck with Trek bench. Added feature of hot tub is custom color choice lighting. Deck has separate stairs to yard and private access from master suite. Plenty of privacy with mature foliage of back yard and no neighbors on either side.



Great home for entertaining.

Dining Room



Main entrance to house.



View from living room.



Built-in china cabinet with dimmer lighting feature.



Ceramic tile floors with look and texture of wood.

Custom cabinetry designed by homeowner.



If you really want to make a friend, go to someone's house and eat with him...the people who give you their food give you their heart... Maya Angelou



Kitchen



Ceramic tile floors with look and texture of wood.

Tons of space for storage and meal prep.

The 3ft x 5ft granite island allows guests to sit and chat while dinner is prepared or used for an informal meal and breakfast



12 1/2 ft x 5 1/2 L-shaped granite counter. Double wall oven, an every kitchen necessity.

Mosaic tile wall with custom tile inserts for oil and spices.

Every aspect of this kitchen was designed by homeowner considering his wife's talents of a chef, conscious of each step she takes.

Whether it be to create that huge family dinner for many occasions or the simple pizza night delight!

All appliances are three years young!



Custom~designed by homeowner, lighted pot rack to hold the heaviest of pots!
Hand~Hammered Copper sink just under the window with perfect view to the deck and back yard.
Black glass cooktop with mosaic tile backsplash.



Living Room

Open Concept kitchen and living room creates great flow throughout the home.



View from top of second floor stairs.



View from bottom of stairs.



Beautiful wood-burning fireplace. Which highlights the great ceramic tile flooring.

Large inviting living room with lots of space to entertain.

Ceramic tile floor replicating wood.

Custom handsome stairs to second floor.

Large wood-burning fireplace.

Wired for a great surround system for music and movies!

Imagine your holidays in this gorgeous home with friends and family!

Lots of room for overnight guests.



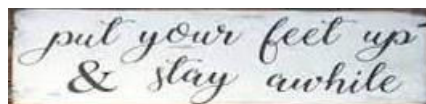
View of living room from dining room.



View of kitchen from living room.

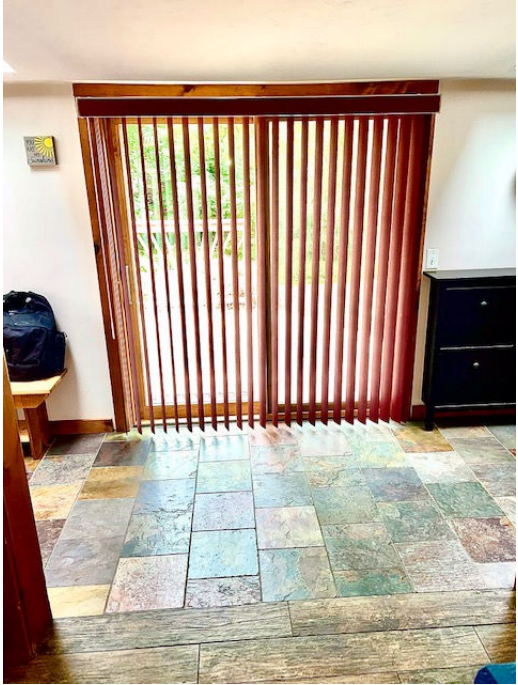


Expansive space combining living room and kitchen.

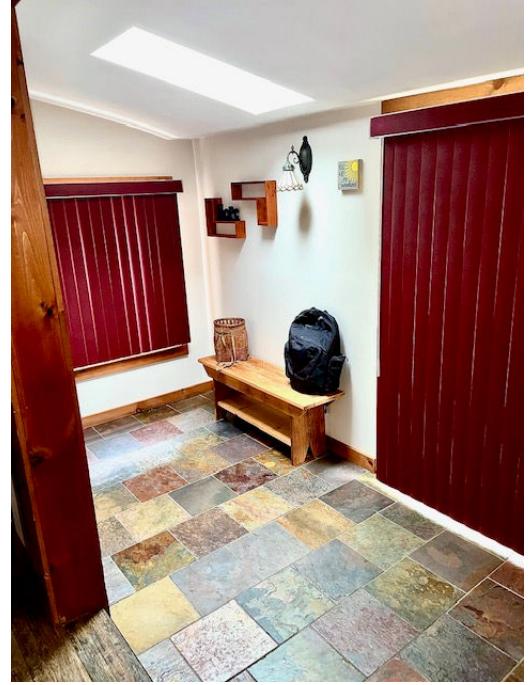


MUDDY BOOTS OFF PLEASE!

Mud Room



Room darkening blinds.

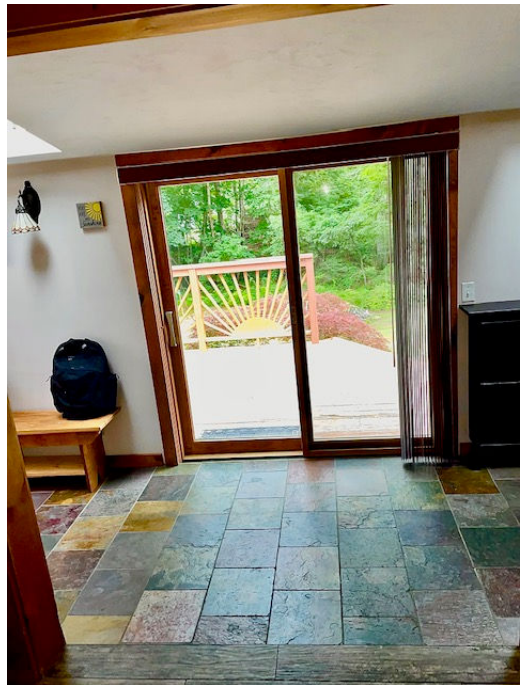


Boots-off area!



Entrance from garage.

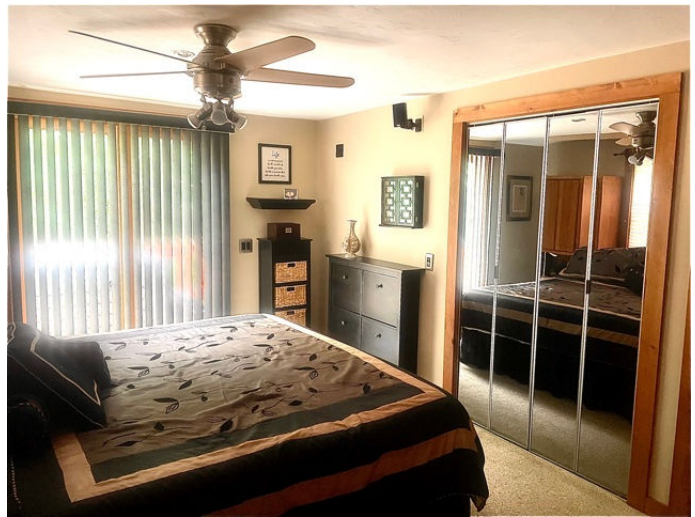
114 sq. ft.



Entrance from deck.



Front to Back Large Master Suite



**Wired for Surround
Sound**



**Lots of natural lighting
or use the room
darkening window coverings.**



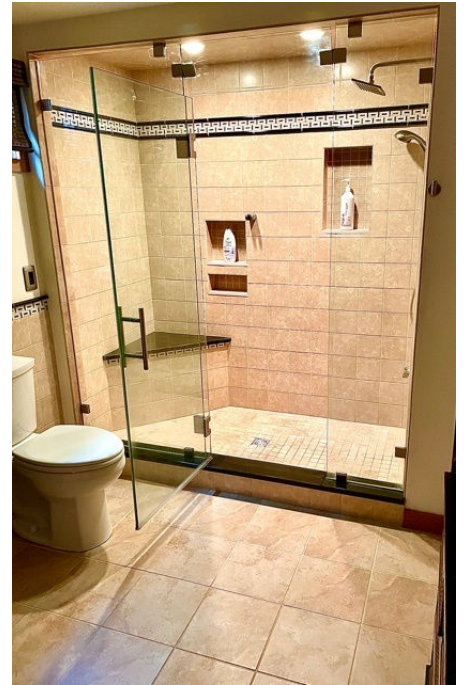
**Hot Tub Access to
Deck off Suite**

450 sq. ft.

The Master Bathroom



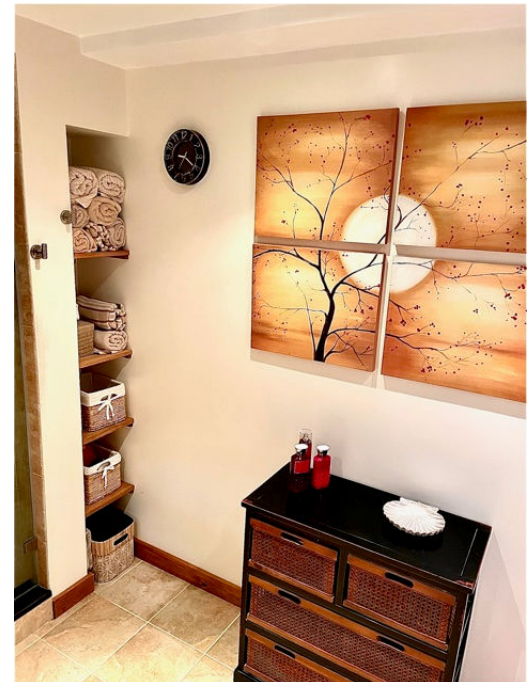
Glass Shower Enclosure



Heated Ceramic Tile Floors



80 sq. ft.

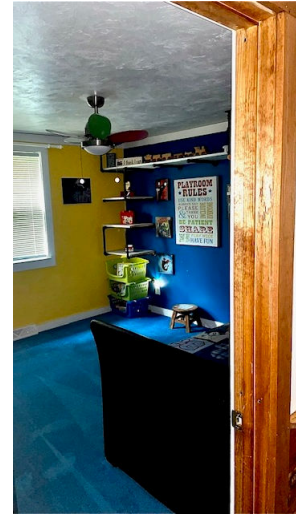


Luxury at Its Best

The Children's Playroom/Bedroom



Let the Fun Begin



168 sq. ft.

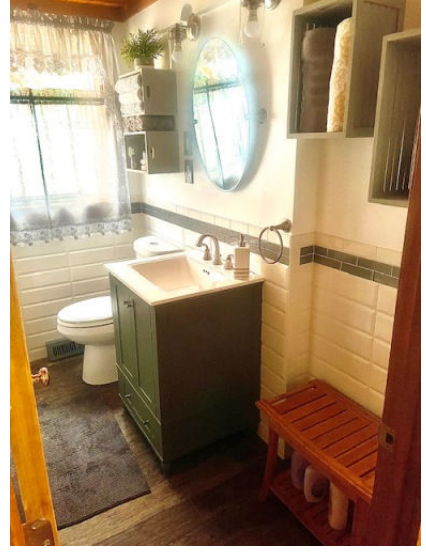


Loads of
Storage Space

Custom Wall Shelves



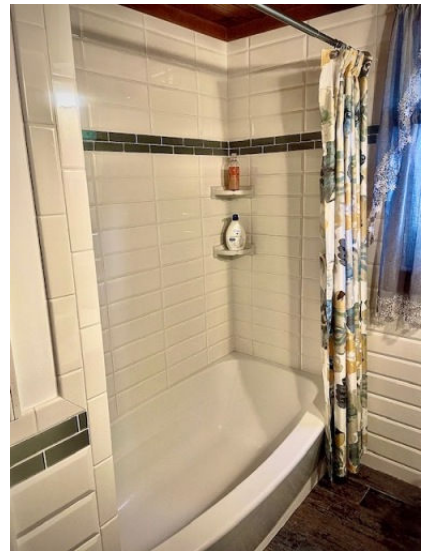
Guest Bathroom



Beautiful, Full Guest Bath
Located on the Main Floor



48 sq. ft.



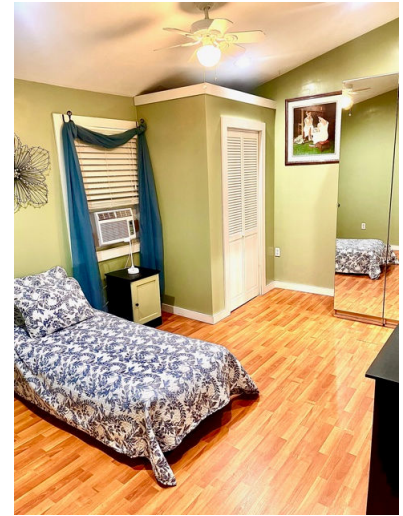
Second Floor Bedroom One



**Bath entrance left.
Bedroom entrance center.**



**Beautiful true hardwood floors,
1 functioning skylight, ceiling fan
with light, recessed lighting,
2 functioning
awning windows and 2 full size
windows.
Great natural light and fresh air
flow!**



143 sq. ft.



**L-Shaped 3 door glass
front armoire with 6
drawers,
4 shelves and 3 hanging
rods. Plus closet to left.
Loads of storage!!**



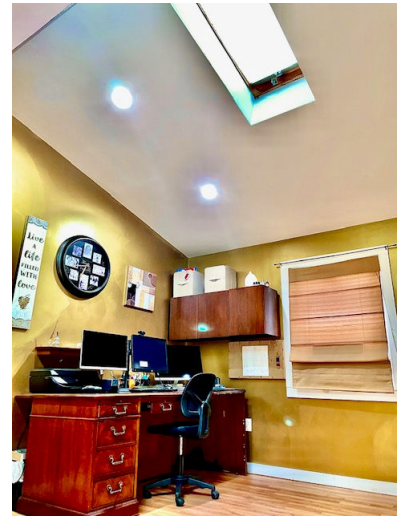
Second Floor Bathroom



**Hardy, beautiful stairway to second floor landing.
Bathroom with great natural light.
Uniquely decorated and lots of room.
Large granite top vanity and
great shower tucked in the corner.**

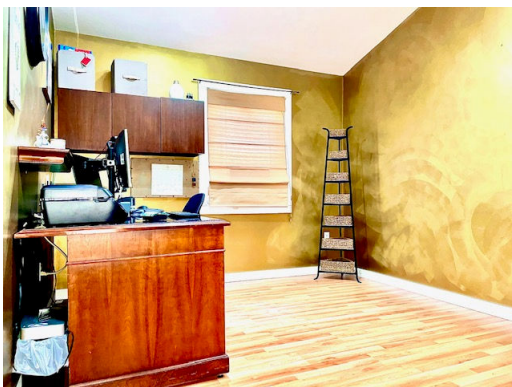


Second Floor Office/Bedroom



Another room with great natural light with functioning skylight and awning window, plus regular window.

Plenty of space for additional office furniture.
OR...this would make a wonderful large bedroom!
Gold textured paint. Beautiful true wood floors.
Custom recessed shelves.



Garden & Tool Shed



The spacious 10ft x 16ft custom garden shed, with same metal roof as house, is located in the back yard, set back from the reprocessed concrete RV pad. The convenient ramp is great for the lawn mower or snow blower! Easy access in and out as there is also a conventional door if you just want to grab a shovel or garden supplies!



A garden is a friend
you can visit anytime.



Welcome to the Open House of
116 Plymouth Street, Carver, MA 02571
This property has all the amenities that you've
been seeking in a larger home....AND more!



**Philip Howard, Real Estate Agent, Broker Associate
with over 35 years in the
Massachusetts Commercial and Residential
Real Estate Market**

Cell: 617/803-1516

Email: phoward@remaxspectrum.com



*Please support our troops who serve and our veterans who unselfishly gave so much
for our freedom and liberties.*